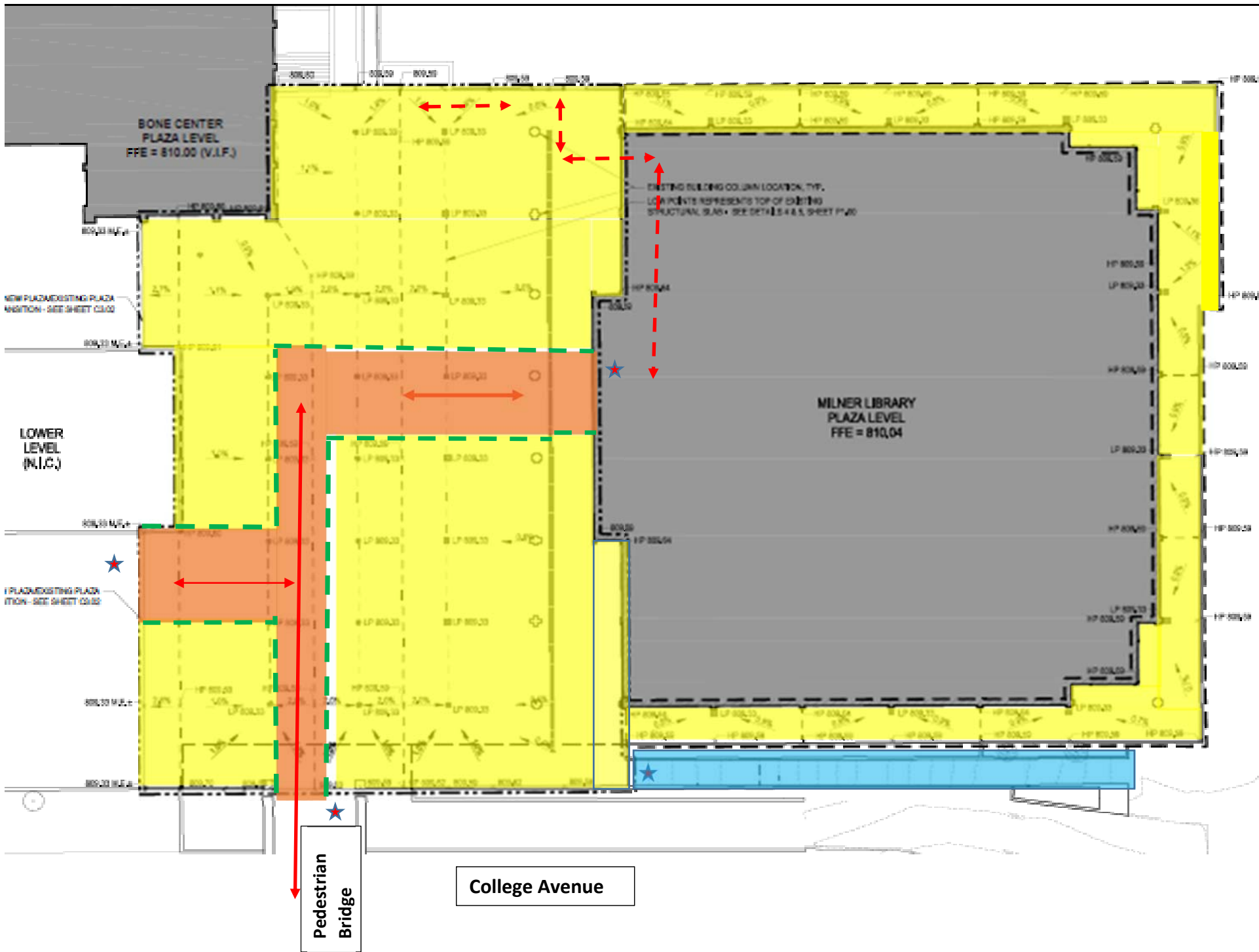







**Milner Library Plaza Deck Construction and Access Plan**  
**11-5-2018**



**Legend:**

-  Access to BSC, Milner Library, Milner Plaza Deck and Quad  
Access path thru interior of building.
-  Access to BSC, Milner Library, Milner Plaza Deck and Quad  
Access path exterior.
-  Area of previous and current construction. The walking surface is uneven.
-  Area of new pedestrian Path. Note some areas of the path are uneven. And temporary sloped ramps are used.
-  Ramp is CLOSED until December 2, 2018. Please use the pedestrian Bridge over College for wheel chair access to the Plaza Level.

**Note:**

After December 2, the Plaza Deck Project is expected to be completed and the Plaza Deck will be open. This does not include the area adjacent to the Bone Renovation Project.